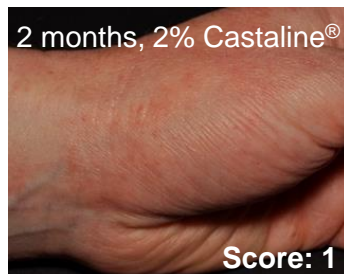
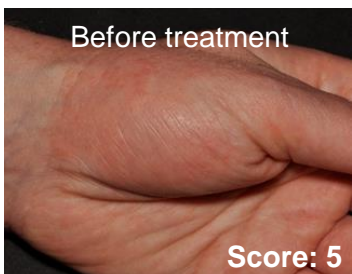


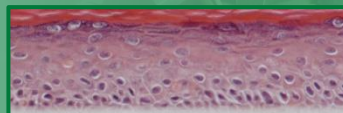
# Castaline® – Relief for atopic prone skin

## Examples of volunteer results



**Dermatologist** evaluated a **significant improvement** at **D56** for **86%** of volunteers

## Tested on a new, innovative 3D epidermis model, mimicking skin prone to atopy



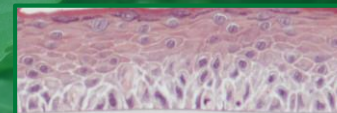
Control 3D model

Regular, healthy layer structure of the epidermis



Inflammation simulation \*

Presence of apoptotic cells, no evidence of a basal layer



Inflammation simulation + 0.2% Castaline® \*

Regular, healthy layer structure of the epidermis

\*Addition of *Staphylococcus aureus* and a cytokine blend (IL-4, IL-13, IL-31), specific of acute atopic dermatitis, plus TNF $\alpha$ ,  $\pm$  Castaline®, during the formation of the epidermis model

Decrease of TEWL



2% Castaline®



- From manually harvested, organic certified leaves
- By-product valorization of French chestnut trees

### Description:

Extract of manually harvested leaves of organically grown chestnut trees from France, rich in specific flavonoids

### Dose of use:

0.5-2%

### Available *in vivo* studies:

- Reduction of TEWL
- Improvement of the atopic prone skin condition

### Formulation notes:

- Recommended pH: 3-7
- Widely compatible with most ingredients, including up to 80% ethanol

### INCI:

Glycerin (and) Aqua (and) Castanea Sativa (Chestnut) Leaf Extract



Suitable for vegan concepts



Preservative-free



Short INCI



Derived from plants sourced in Europe



From organically grown plants



100% natural origin



Cosmos certified



Upcycling



Sustainably sourced

Last update: October 2023